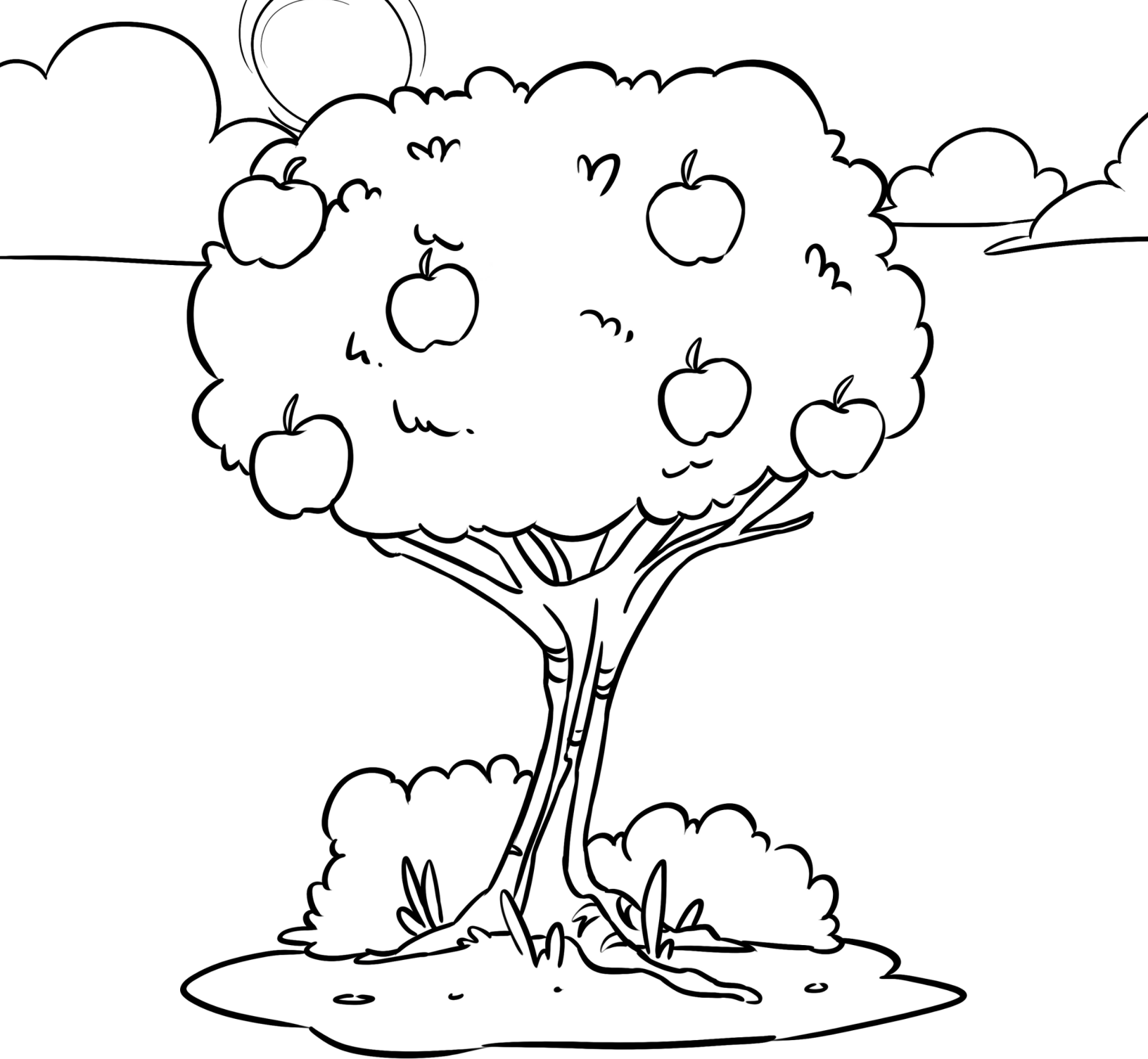




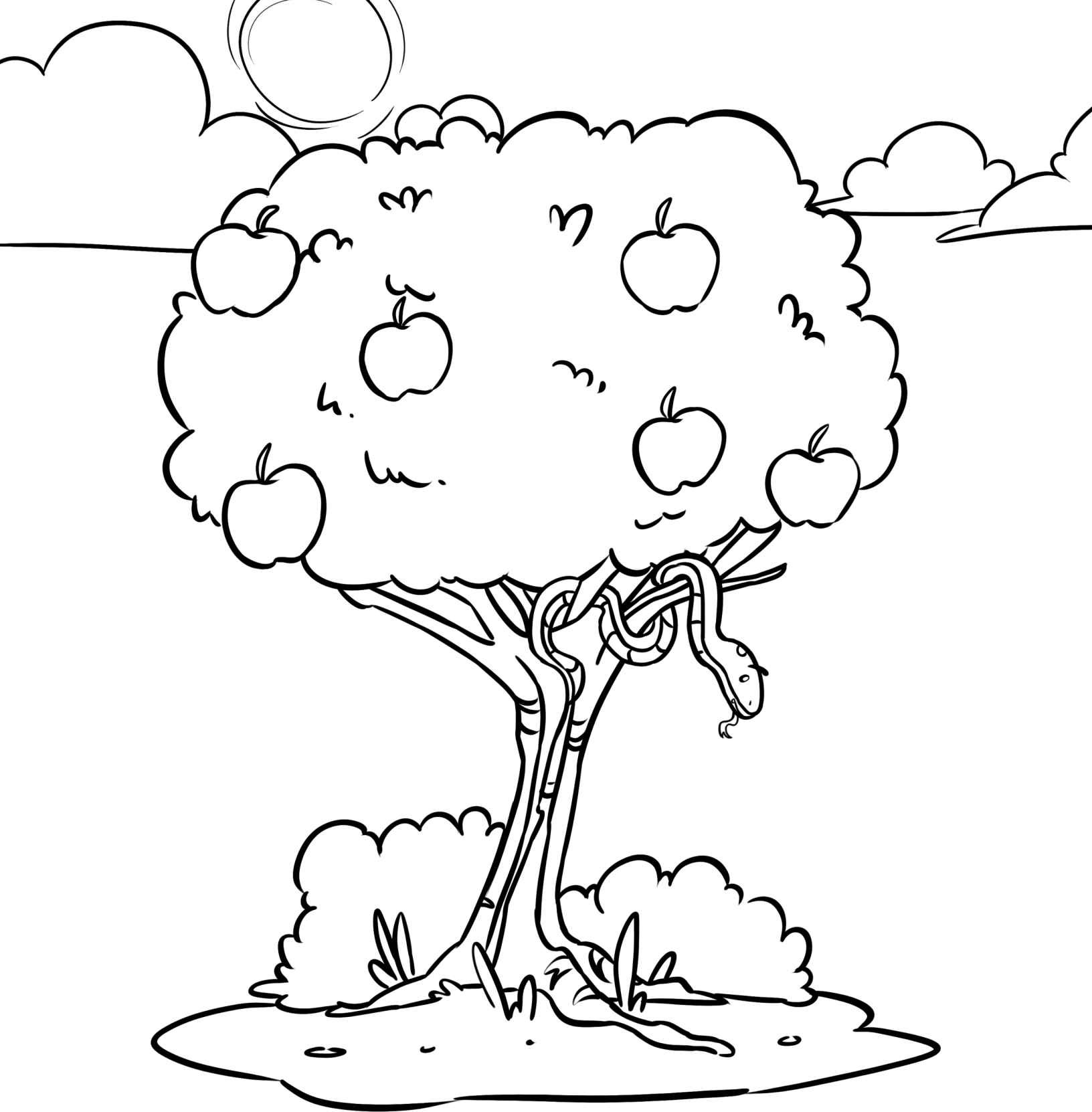
ADAM AND EVE LIVED IN THE GARDEN OF EDEN



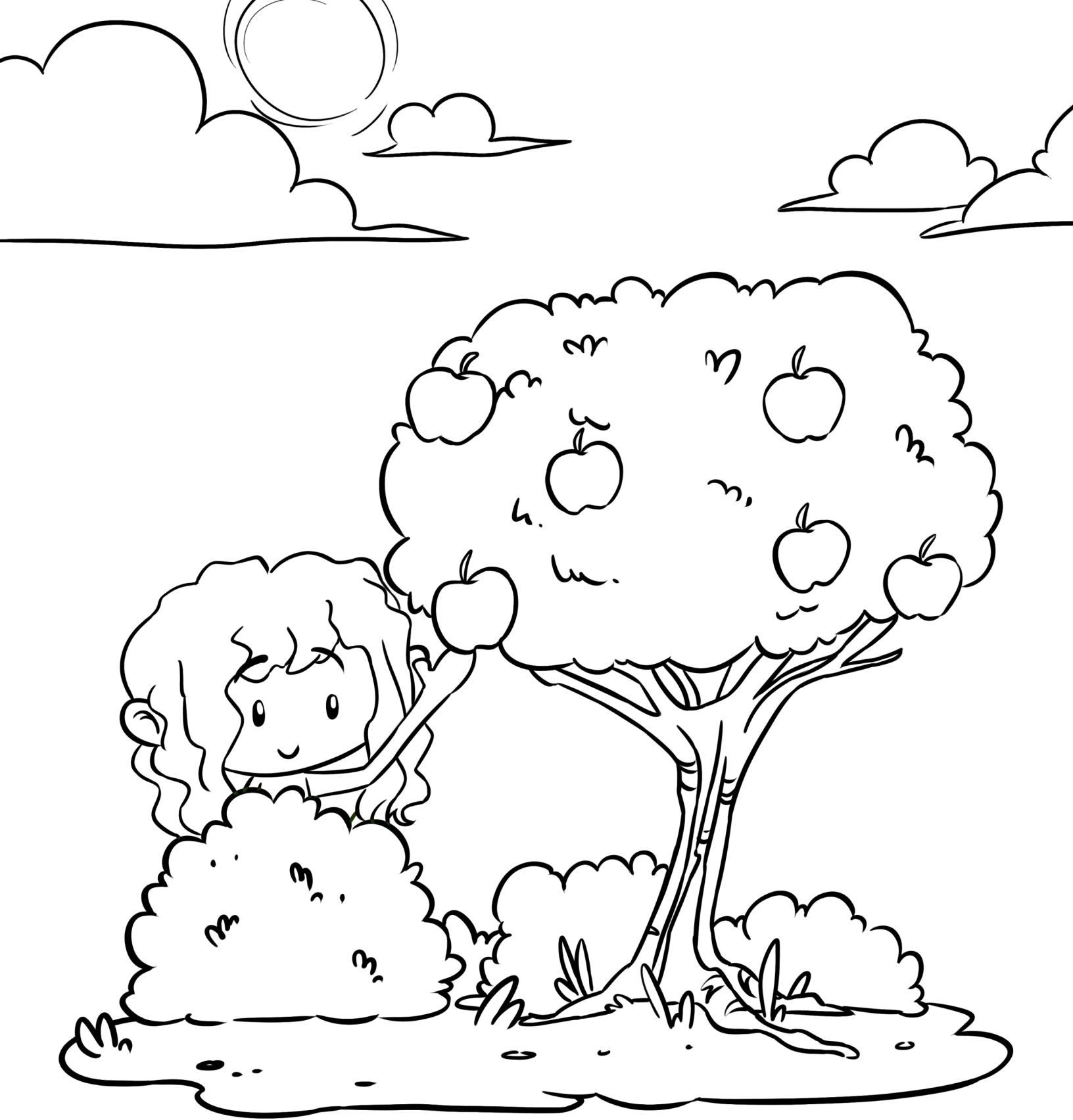
THERE WERE TREES AND PLANTS WITH GOOD FOOD LIKE APPLES, BANANAS, GRAPES AND WATERMELON. THERE WERE FLOWERS AND TREES AND PLANTS THAT WERE BEAUTIFUL TO LOOK AT.



IN THE MIDDLE OF THE GARDEN WAS A TREE
CALLED THE TREE OF THE KNOWLEDGE OF GOOD
AND EVIL. GOD TOLD ADAM AND EVE THEY
COULD EAT ANYTHING IN THE WHOLE GARDEN
EXCEPT THE FRUIT THAT WAS GROWING ON
THAT ONE TREE.



ONE DAY, A SERPENT TALKED TO EVE AND TOLD HER TO EAT THE FORBIDDEN FRUIT. "IF YOU EAT SOME OF THAT FRUIT, YOU WOULD KNOW THINGS YOU DIDN'T KNOW BEFORE," THE SNAKE SAID. "YOU WOULD BE LIKE GOD."



EVE LISTENED TO THE SERPENT AND TOOK SOME
FRUIT.



EVE ATE THE FRUIT.



THEN SHE SHARED IT WITH ADAM.



ADAM AND EVE KNEW THEY DID SOMETHING
WRONG. THEY DISOBEYED GOD.



THEN GOD MADE THEM LEAVE THE GARDEN AND
PUT AN ANGEL AT THE ENTRANCE.



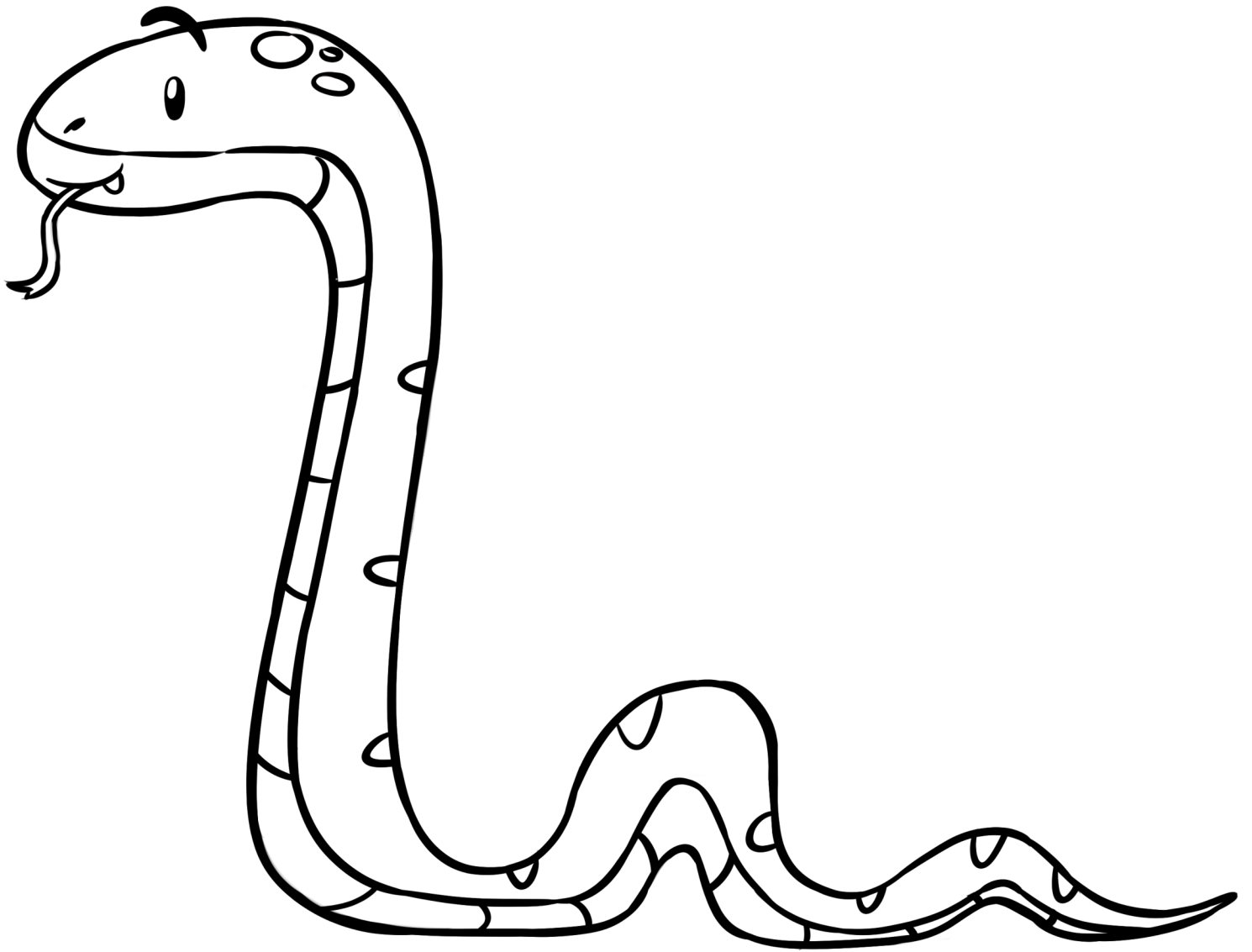
Adam



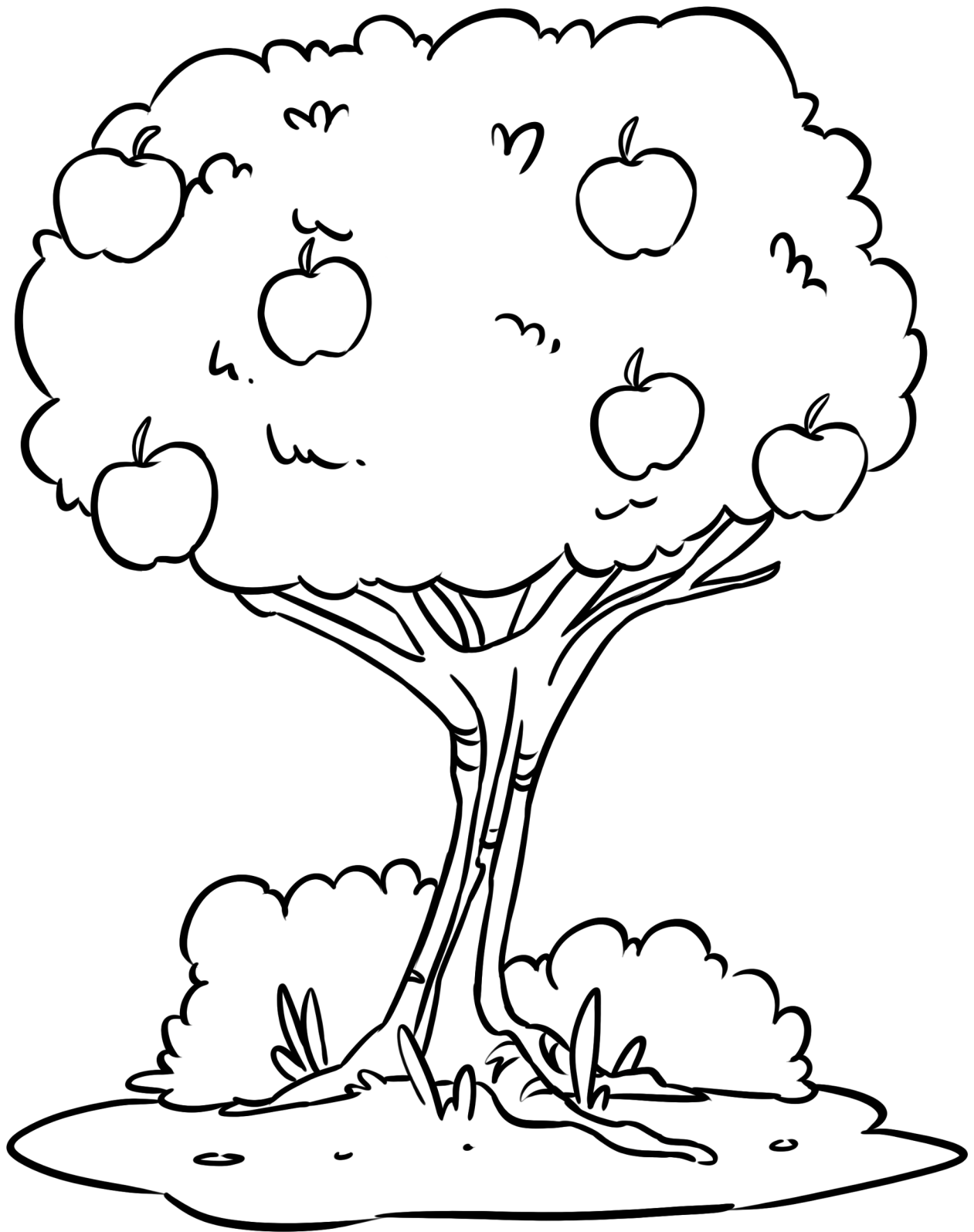
I
L V E



Angel

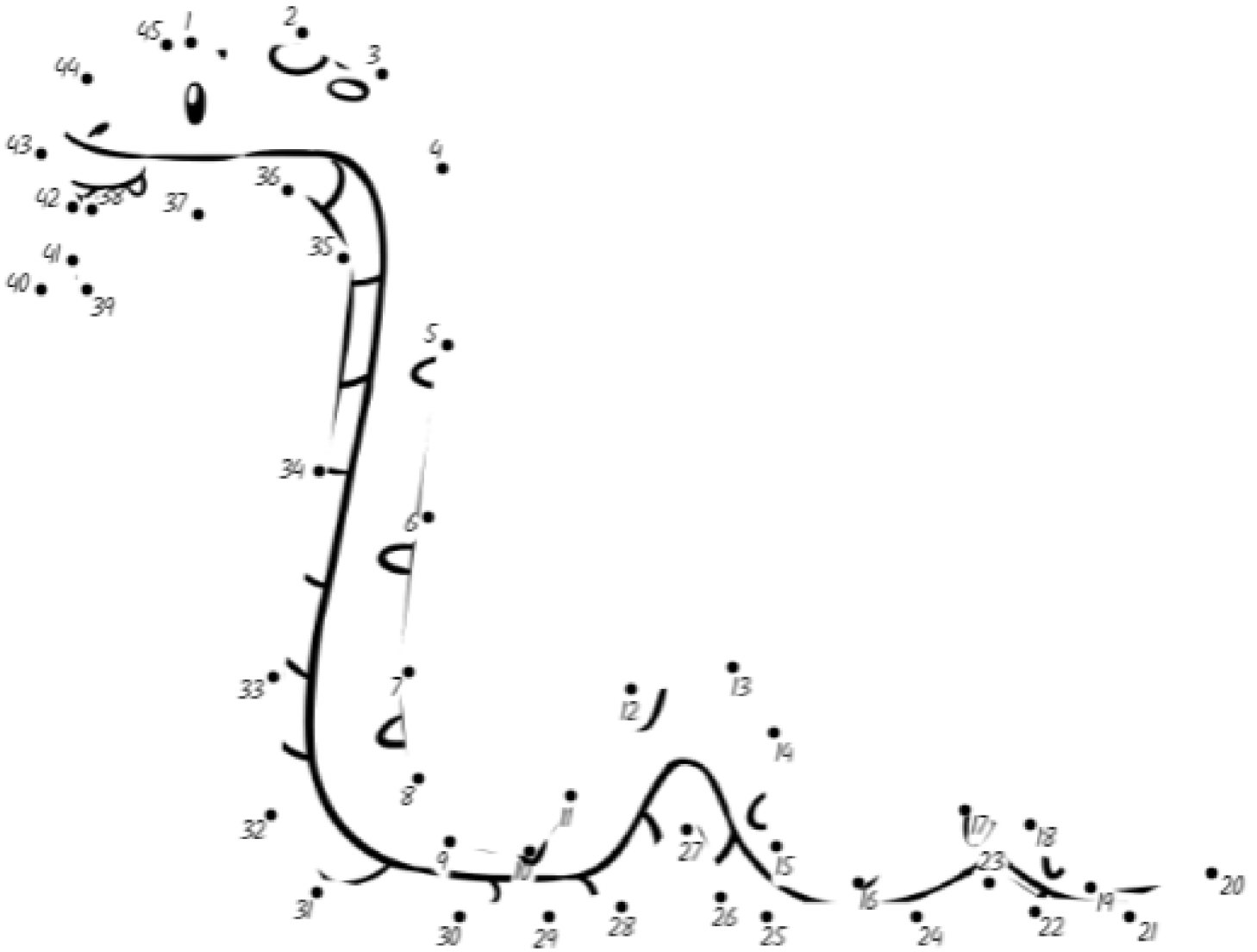


Snake



Tree

Connect the dots



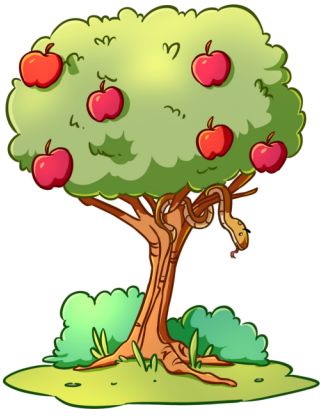
Word Search

G S D Y L C I X K N O K M V N
R A A Q I H C H B P R Y H O Z
O L R I F R L W H C Y P I R S
Z Z S D E T E M P T A T I O N
A V P X E E A I H R A Y F D T
S B F W L N D L G E U B O S K
V Z T G E C A K R Z L G E C I
F R I P R E M C E G I D J M C
U P I S I N R E K E T F E W W
T I U R F D M T A A R V G X T
S A X O F I B U N Y A O D S U
O W C U J R A B S P Y N V O P
K D W P R N G C L E O E G V C
V X K H R X C Y F D V A M E G
F L P L V V A G U E P H X Z L

ADAM
ANGEL
CREATION
EVE

FRUIT
GARDEN
GOD
LIFE

SIN
SNAKE
TEMPTATION
TREE



Word Scramble

DAMA

VEE

ETRE

DOG

GAREDN

SNKEA

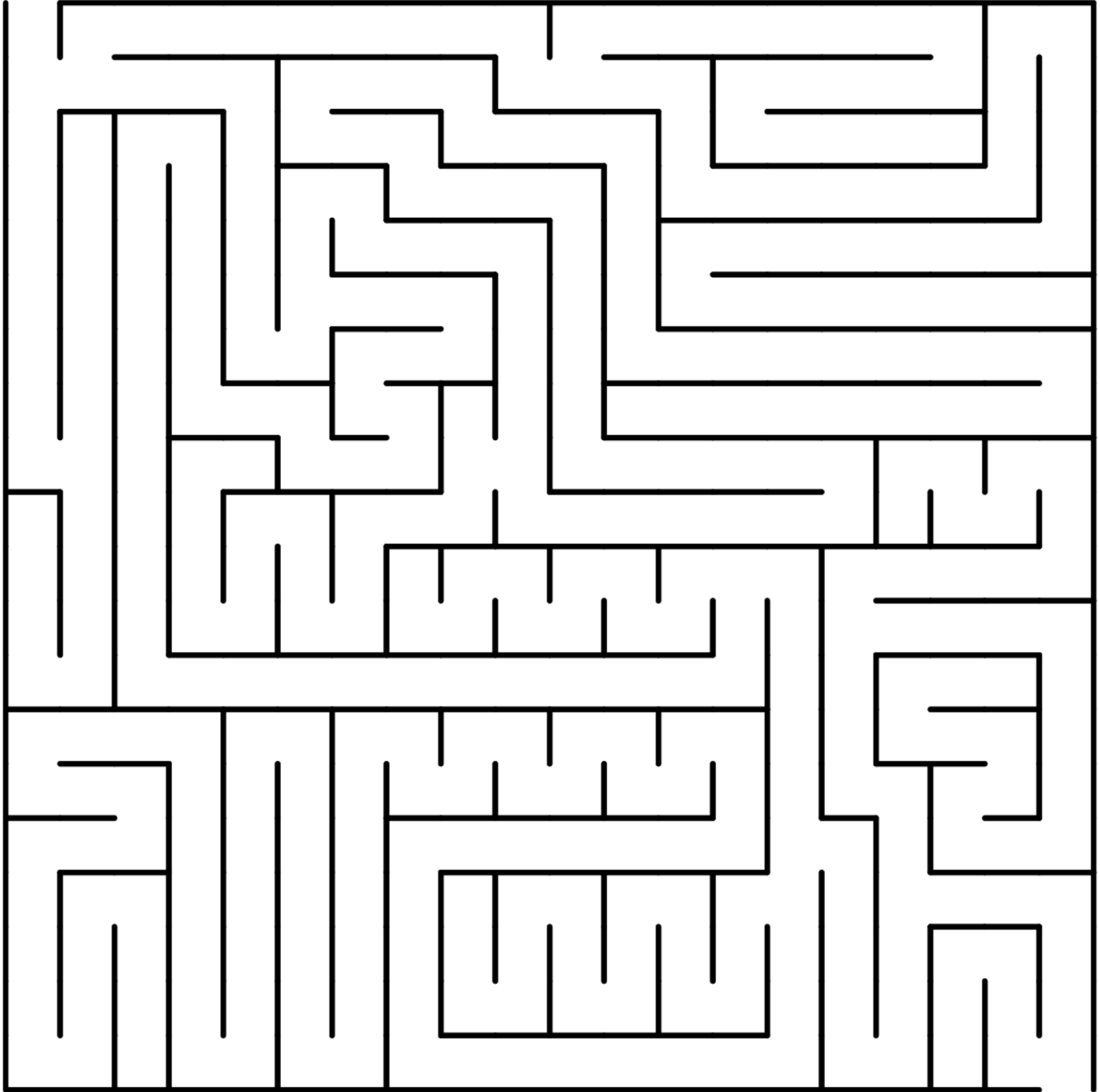
NIS

LEFI

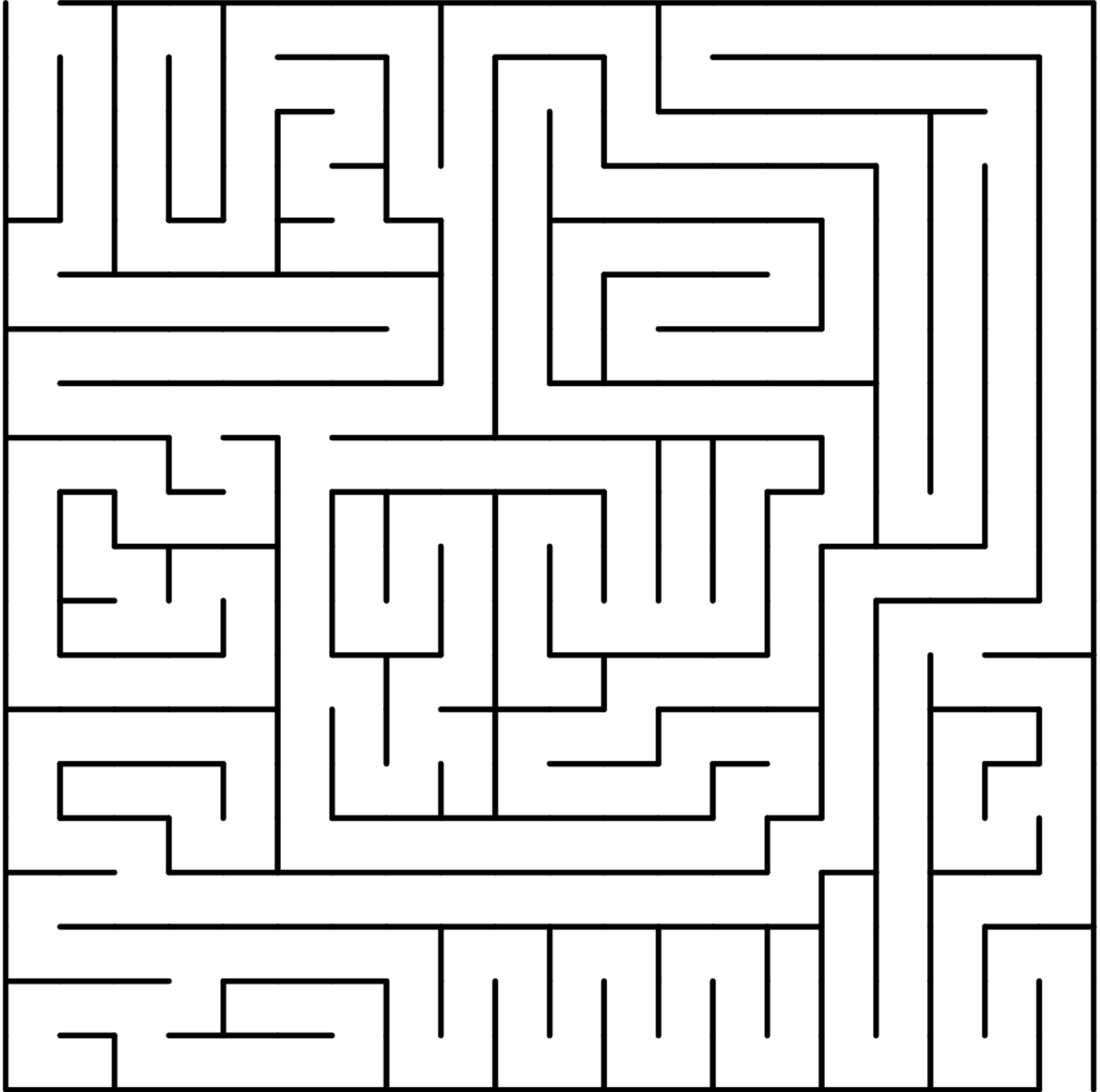
AGNEL

TFUIR

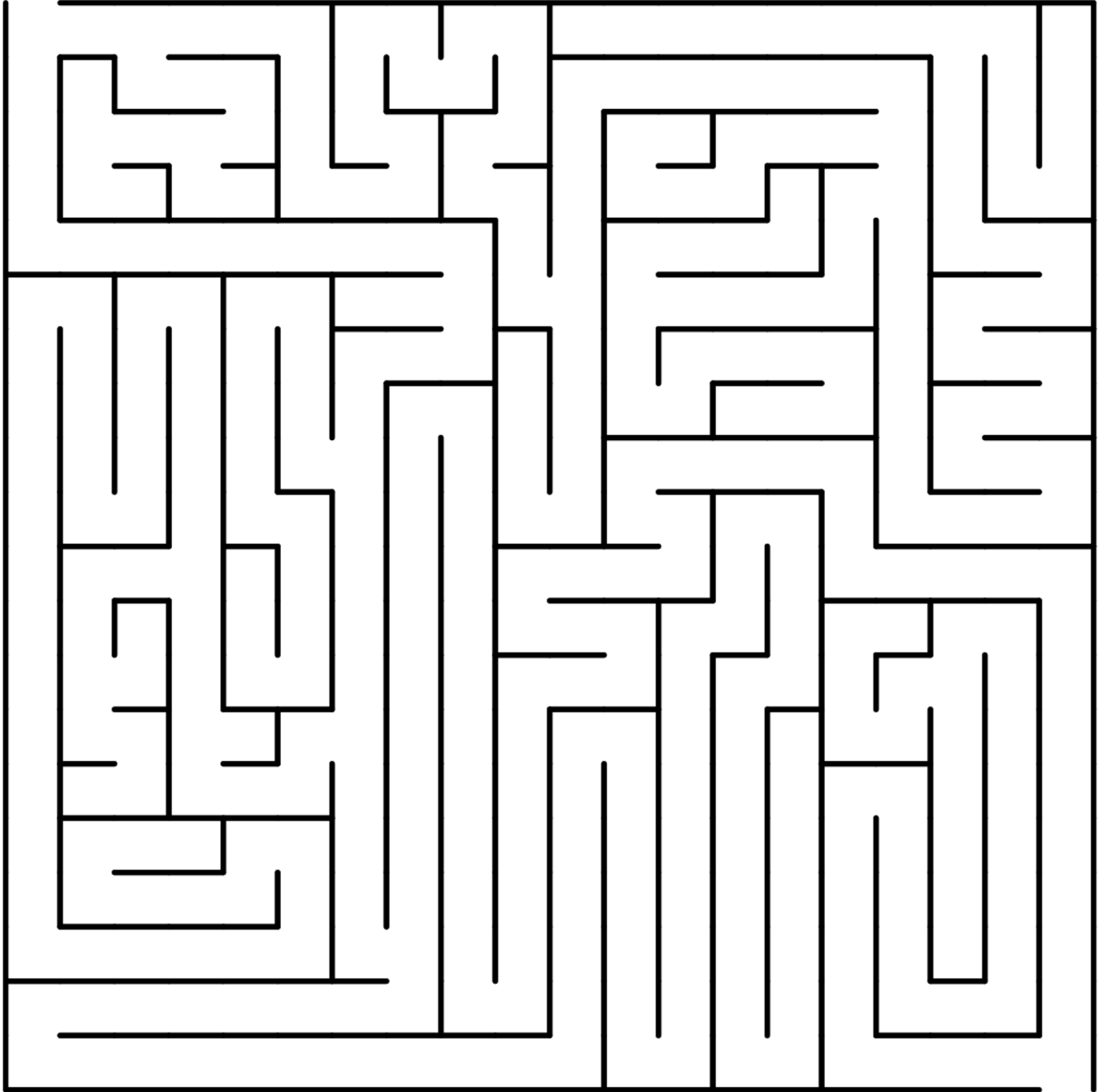
Maze 1



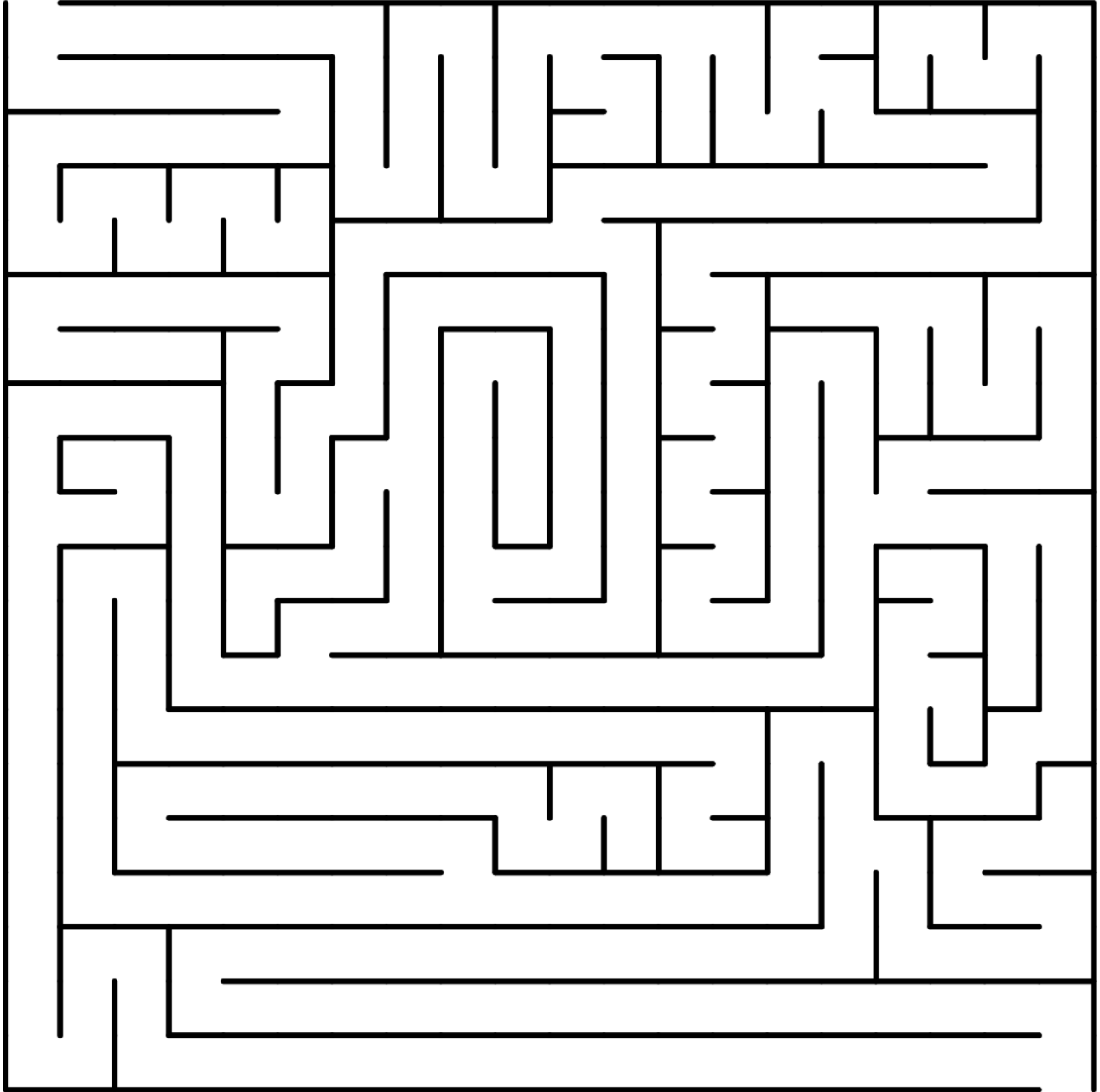
Maze 2



Maze 3



Maze 5



Adam and Eve's Tracing

Trace the line from one image to the other



Cutting Practice

Cut the lines until you get to the image





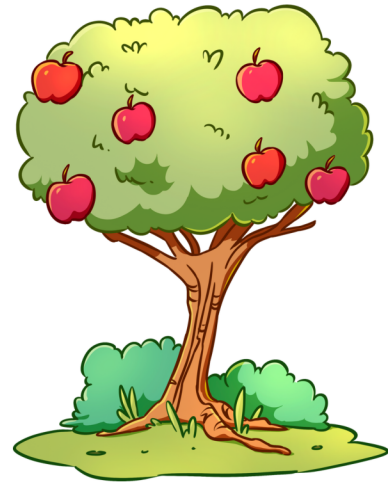
missyprintabledesign.com



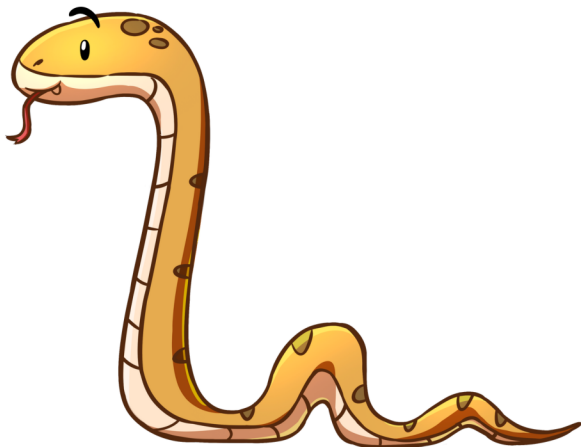
missyprintabledesign.com



missyprintabledesign.com



missyprintabledesign.com



missyprintabledesign.com



missyprintabledesign.com



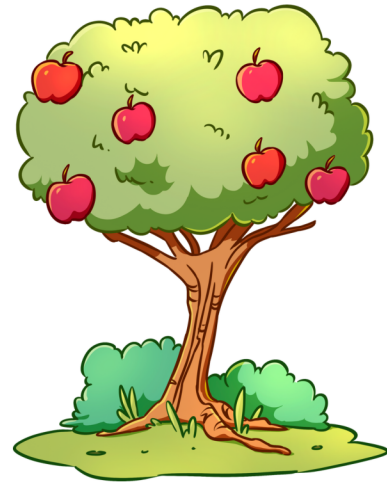
missyprintabledesign.com



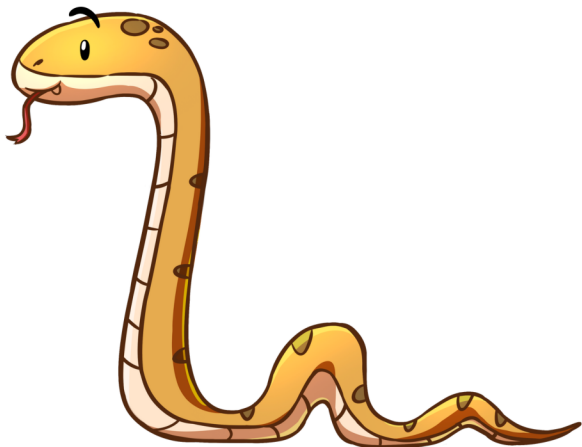
missyprintabledesign.com



missyprintabledesign.com



missyprintabledesign.com



missyprintabledesign.com



missyprintabledesign.com



missyprintabledesign.com



missyprintabledesign.com



missyprintabledesign.com



missyprintabledesign.com



missyprintabledesign.com



missyprintabledesign.com

Cut the pieces to the story and put them in the correct order



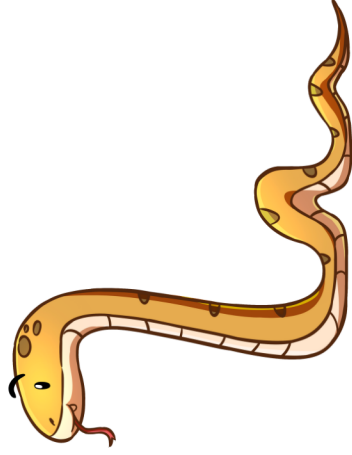
Adam and

Eve

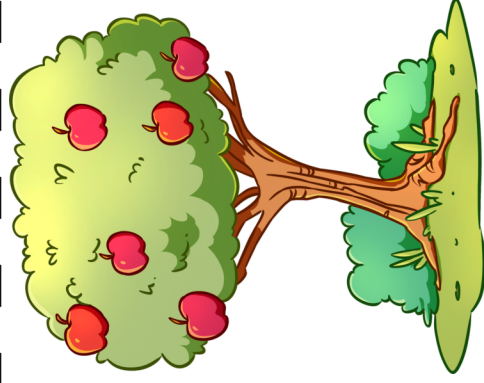
Genesis 2-3



Adam and Eve
lived in the
garden of Eden.



One day the
snake told Eve to
eat the fruit.



God told them not to
eat the fruit from the
tree in the middle of
the garden.



Adam and Eve knew
they did something
wrong. They
disobeyed God.



Eve ate the fruit.



Eve shared the
fruit with Adam.



Then God made
them leave and
put an angel at the
entrance.