

Name _____

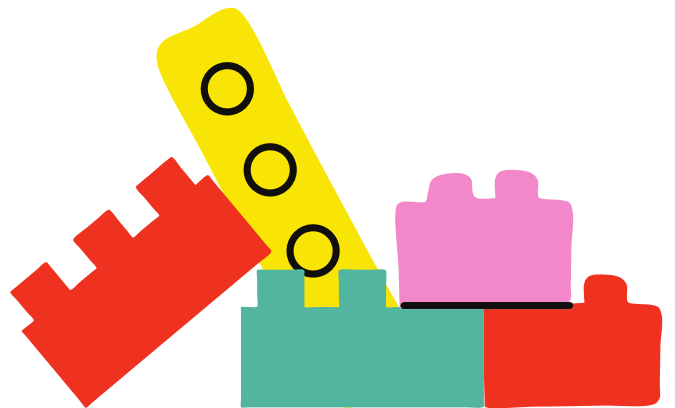
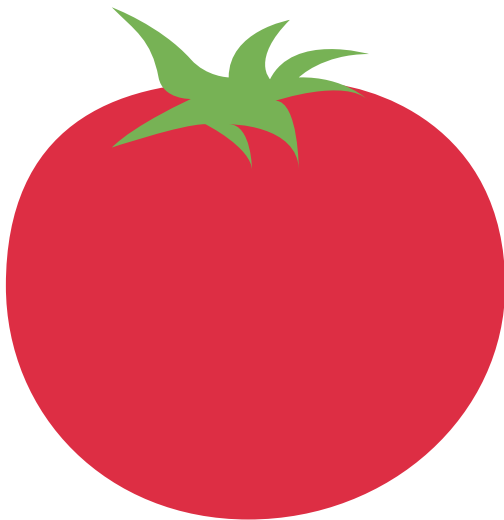
Date _____

T t



T is for tiger

Tracing practice lines for the letter T. The first row contains four dashed uppercase 'T's for tracing. The second row contains four dashed lowercase 't's for tracing.



Tracing practice lines for the words 'tomato' and 'toy'. The word 'tomato' is written in dashed letters on the first row, and 'toy' is written in dashed letters on the second row.